

# **HIP2P IP Camera CMS user manual**

---

Version: 4.0

# foreword

The CMS of IP Camera is used to realize all front-end network video monitoring devices(including network video server, IP camera) centralized monitoring, storage, management and control. The management software can manage Max 96 front-end network monitoring devices; can set and control any device, and other functions; can support 1/4/6/8/9/16/25/36 pictures display on one screen, and two-way voice talk back, logs retrieval, and other functions. With powerful function, friendly interface, and simple operation, it is convenient for users to realize networking applications for large-scale remote network monitoring system.

### Statement:

1. The contents described in this manual may exsit some difference with the vesion you are using. If you have some questions can not be solved, please contact our technical support department or products supplier.
2. The contents in this manual will update irregularly, our company reserves the rights without prior notice.

# HIP2P IP Camera CMS user manual

## content

1. Installtion instructions.....	4
1.1. Installation requirements .....	4
1.2. Installation step .....	4
2. CMS detailed instruction.....	5
2.1. login and instruction.....	5
2.2. software interface instruction .....	6
2.3. Device management .....	8
2.3.1. Add device.....	8
2.4. image preview .....	9
2.5. PTZ control .....	11
2.5.1. PTZ control .....	11
2.5.2. preset setting.....	11
2.6. Record management.....	12
2.6.1. plan of record .....	12
2.6.2. manual record.....	13
2.7. Local playback .....	14
2.7.1. playback by time searching .....	14
2.7.2. playback by searching file.....	15
2.8. User management.....	15
2.8.1. Add user .....	16
2.8.2. delete user.....	16
2.8.3. modify user permissions.....	16
2.8.4. modify user password .....	17
2.9. Logs.....	17
2.9.1. log retention time .....	17
2.9.2. log query .....	17
2.9.3. log backup.....	17
2.10. Other settings .....	18

# 1. Installtion instructions

## 1.1. Installation requirements

### Hardware enviroment:

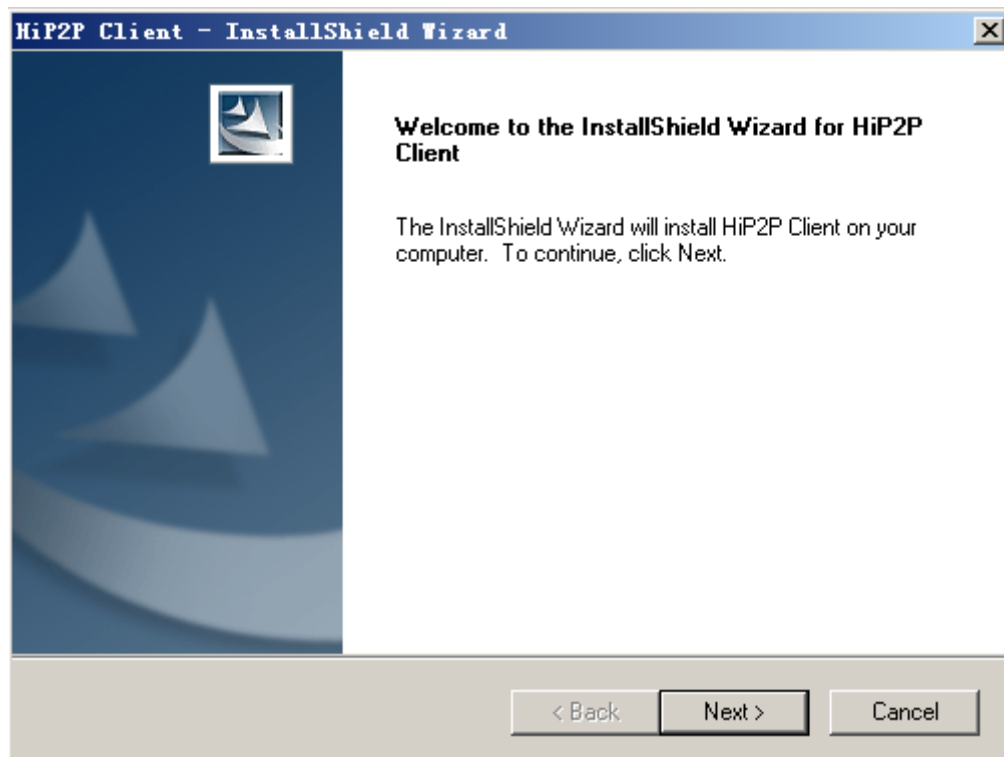
- 1、 Pentium IV series, CPU basic frenquency more than 2.0G
- 2、 more than 2G memory
- 3、 Hard disk 120G or higher
- 4、 display resolution 1024 x 768 or higher

### Software environment:

Windows2000/Windows XP/Windows2003/Windows Vista/Windows 7,Windows2000/WindowsXP/Windows2003/Windows Vista/Windows 7/Windows8

## 1.2. Installation step

Double-click the installation package, it will pop up below interface:



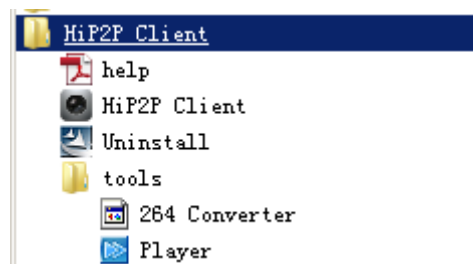
Select the installation path, click “Next”, then installation finished.

## HIP2P IP Camera CMS user manual

After installation, it will show below icon on desktop:

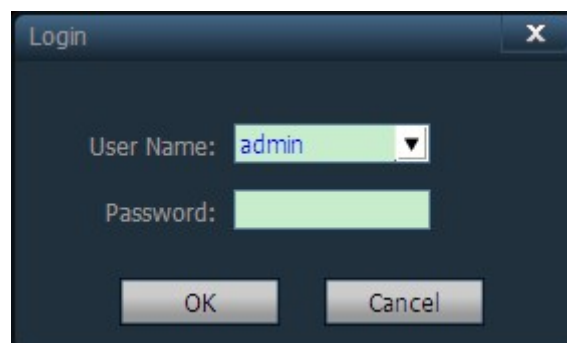


In the program bar will show following interface:



## 2. CMS detailed instruction

### 2.1. login and instruction



**【Log in】** When log in, the default user name is admin and password is empty , click “OK”to enter into CMS Main interface.

**【Exit】** Only the users with admin permissions can exit from CMS, user and guest can not exit from CMS.

**When exit from CMS, you need to input the admin permissions's user name and password.**





## 2.2. software interface instruction



The software interface as shown in above, mainly divided to 6 sections:

- |                     |               |                   |
|---------------------|---------------|-------------------|
| 1 System button bar | 2 tab bar     | 3 device list     |
| 4 real-time preview | 5 PTZ control | 6 Alarm info list |

### ◆System button list:

-  Help button, click it to open CMS instruction
-  Hidden button, click it then software hide into system tray
-  Maximize button, click it then software cover entire screen
-  Exit button, click it then software pop up Exit reminder

### ◆Tab bar:



Logo information



click it then switch to image preview interface



click it then switch to recording playback interface

## HIP2P IP Camera CMS user manual



click it then switch to setting interface



click it then switch to log operation interface



logout user and switch user



click it then exit CMS

### ◆Device List

**【 List mode 】** According to user configuration listing level to show area, setting, and channel


**【Current screen】** show current connected device on screen, only shows in list mode

### ◆Real-time preview




electronic zoom button, click it and use mouse to draw a area on the screen, then area magnification can be realized




Voice talk back button, choose the window need to open talk back, then click talk back button, window status bar will show , talk back can be realized, only can open talk back of one device at the same time.



voice monitoring button, click it to open voice monitoring, window status bar will show , click it again to close voice monitoring, it can open voice monitoring of multiple devices at the same time.



recording button, choose the window need to recording, click recording button to open recording manually, window status bar will show , click it again to close recording manually.



picture capture button, choose the window need to capture picture, click capture button to realize picture capture, if click capture button

## HIP2P IP Camera CMS user manual

continuously, 1 second can capture 2 pictures at most.



Multi-image choosing button, click it to choose multi-image display, 1,4,6,8,9,16 image options.



Full screen display button, click it then real-time preview area will be full screen displaying.



Alarm message list shrink or extend button, click it that alarm message list shrink, click again then alarm message list extend.

## 2.3. Device management

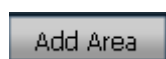
### 2.3.1. Add device

Before using the CMS, you need to add device and configuration. Click “setting” button in tab bar, enter into device management page.

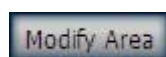
#### 【Add list list】

When run software initially, default list tree is empty. Click “add area”button, pop-up “add area”dialog box. After filling in name in area name column, click ok to add a area in list tree. Because of the added area is the first area, so this area do not exist belongs area, the area is empty.

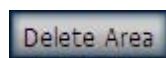
**Note: List tree can add Max 128 areas at present.**



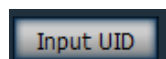
Add area into device tree



Modify the name of selected area



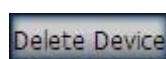
Delete the selected area



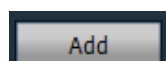
Add device manually, click it to pop up dialog box of add device



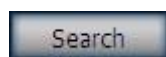
click it, then pop-up dialog box of editing device



Delete the selected device



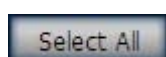
add the searched devices to selected area



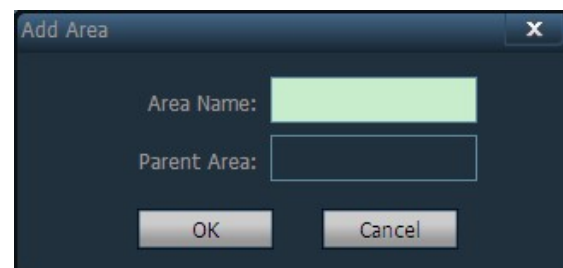
click it to search the devices in LAN





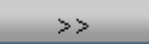


choose all devices in searching list




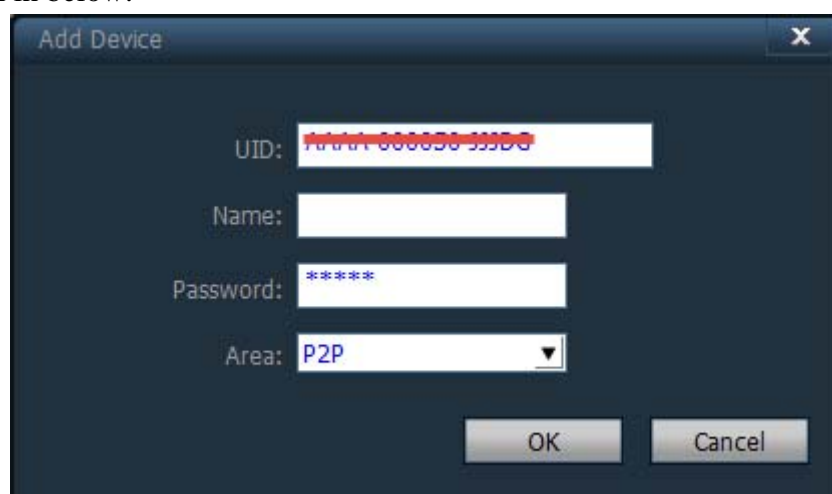
## 【 Add device】

### ◆search to add device in LAN

Clicking search button, the CMS will search out all devices in LAN, then select the device needed to add in search list, and select area, click  button to add device, thus you can add selected device to this area.

### ◆ add device manually

Click  button, it will pop-up below dialog box of add device, as shown in below:



【UID】 UID of the device, each device has different UID

【Name】 name of the device, it is user-defined. Max 15 Chinese characters. (Note: After Enter name, the device tree in preview window only display device name, don't display device IP Address. )

【Password】 login password of the device, default is admin

【Area】 displaying area of the device

After filling in all required information, click OK to finish device adding.

## 2.4. image preview


After configured device, clicking “preview” button in Tab bar, then back to main interface of monitoring, the default display way of device tree is list tree. You can switch displaying group and list information by clicking “group” and “list” in device tree. The default display images is 4 image segmentation, support Max 36 pictures.


When maximum image segmentation, it has 16/25/36 image mode optional. The



## HIP2P IP Camera CMS user manual



higher the picture, the performance of host also need to be promoted. If 25 or 36 images displaying, we suggest use more than i3 CPU and independent video card.

display image instruction:

: It indicates this channel do not connect any device. If connected, OSD information will be displayed on device.




talkback status, when the icon becomes , it means this channel is talkback, otherwise the channel do not open talkback.

: Listening status, when the icon becomes , it means this channel is listening, otherwise it does not open listening.

: status, when the icon becomes , it means it is recording, otherwise without record

In list mode, please double click device UID or name, or drag UID to windows directly, then it can display image.

After device connected, it will show

a blue triangle  on UID or name; if shows , means device do not connnect. If shows , means it will have alarm. .

Right-click any area, it will pop-up the picture as shown on the right:

**【connected all】** Connect devices in selected area

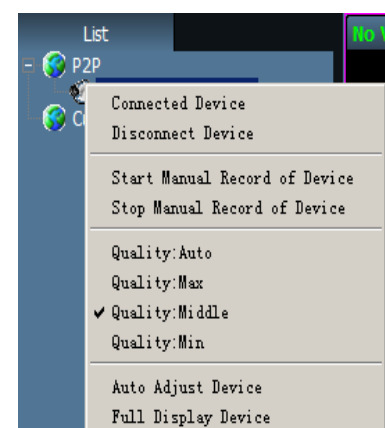
**【start manual record of area】** Open manual record in selected area

**【stop manual record of area】** stop manual record in selected area

**【quality】** Max、 Middle and Min

**【Auto adjust all】** he device adjust image display ratio automatically in select area

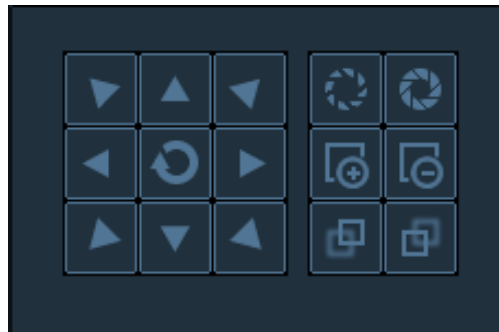
**【Full display all】** the device display images in select area as the size of segmentation picture



## 2.5. PTZ control

### 2.5.1. PTZ control

You can control PTZ of eight directions rotation by direction key, and choose PTZ rotate speed by drag slider, “-” means PTZ rotate speed slow down, “+” means PTZ rotate speed up.



Iris ehlarge button, need the lens of camera support



Iris shrink button, need the lens of camera support



Zoom in button, need the lens of camera support



Zoom out button, need the lens of camera support



Focus in button, need the lens of camera support



Focus out button, need the lens of camera support

### 2.5.2. preset setting

The CMS can support Max 256 preset. Please refer to the preset quantity instruction that camera supported of how many preset can be used in the concrete.

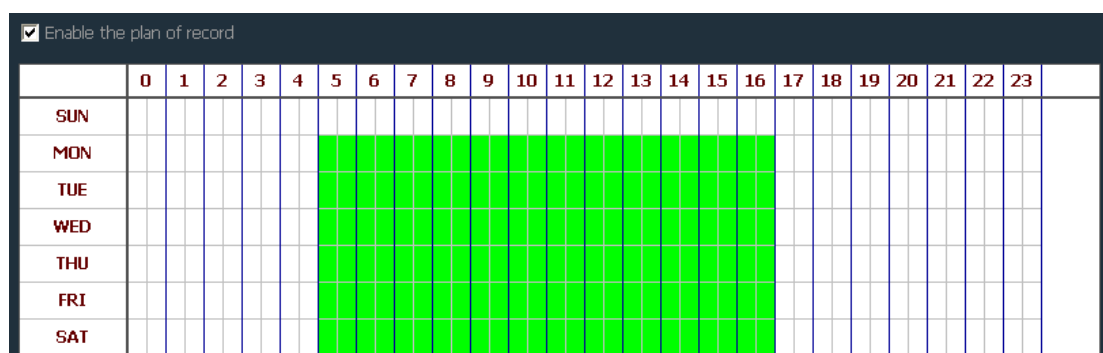
**【Preset setting】** Choose the window that need to set preset, then select preset number, click “preset” button, preset point set successfully.

**【call preset】** Choose the window that need to call preset, then select the preset number, click “call” button, before select call you must set preset firstly.

**【delete preset】** Choose the window that need to delete preset, then select the preset, click “delete” button, thus preset deleted successfully.

## 2.6. Record management

### 2.6.1. plan of record



In the tab bar to choose “setting”-- “record management”--“Enable the plan of record”, as shown in above:

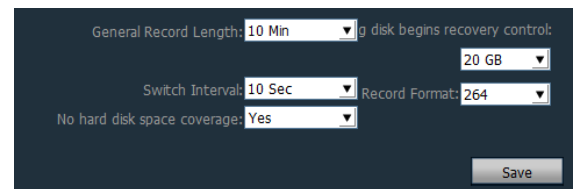
SUN – SAT means one week,based on the count of day ; 0 – 23 means one day, based on the unit of half an hour.

**【Enable the plan of record】** Choose channel, then click the left mouse to drag a green blocks in the schedule, as shown in above; green area is the time bucket that enabled plan of record. After setting time bucket, click save.

**【Close the plan of record】** Cancel the tick in enable plan of record, click save; or cancel green block in schedule and click save. The method of cancel green block: only need to click left mouse and drag mouse, the green block can be cancelled.

**Note: If the plan of record time for all devices are the same, you only need to set one device, then click copy and save, then all devices enabled plan of record.**

**【General record length】** The default record length is 5 minutes in system setting for a single recording file. The file can set 1-30minutes. Please refer to the picture in the right, modify length in general record length, and save it.



**【Remaining disks recycling space】** The scope is 1G-50G optional, when disk space is less than set range, it will skip to another disk or delete earliest record file(default recycling is 10GB)

**【Record format】** 264 and AVI record formats. If record format is 264, you must use manufacturer's player to playback record.


**【No hard disk space coverage】** Select "Yes", when all disk space is less than the set of disk space, it will delete the earliest record. Select "No", when all space is less than the set of disk space, it will stop recording.

	Disk	Total size(G...	Available si...	Path
<input type="checkbox"/>	C:\	29.315	24.390	C:\MediaRecord\
<input checked="" type="checkbox"/>	D:\	50.737	49.416	D:\MediaRecord\
<input type="checkbox"/>	E:\	52.729	50.922	E:\MediaRecord\
<input type="checkbox"/>	F:\	53.486	53.462	F:\MediaRecord\

**【Record path】** After installed CMS, CMS will test the hard disk in device automatically, and display in the list, default to D disk.

**Note: The CMS can support Max 24 drives, namely memory storage can connect Max 24 hard disk.**

### 2.6.2. manual record

Firstly select window, then click  button or right-click window to choose recording. Please check plan of record to see record length and path setting.

## 2.7. Local playback

### 2.7.1. playback by time searching



when recording playback finished, click it continue to play.



stop playing button, when play recording, click it to stop playing.



Frame button, when play recording, click it to single frame play, click one time, it play one frame image.



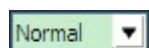
Image capture button, choose play window, click it to capture images to disk.



Electronic zoom in button, select the button in the process of play recording , then draw the magnified image region in the window.



Full screen button, choose this button, the window area will display on full screen, if need to display a single window on full screen, double click the window



When playback record, please select play speed through drop-down box, default is normal speed.



Voice button, you can choose whether open voice during playing record, default is closed.

#### 【record playback retrieval】

Step 1: choose the

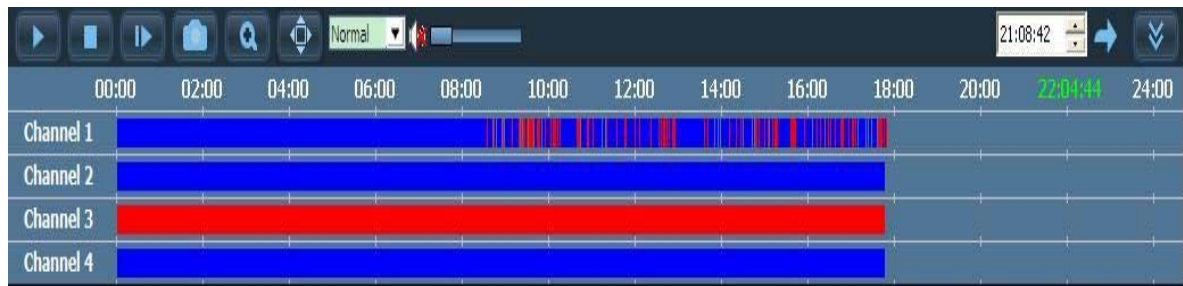
Record file format and search time

Step 2: select the windows that need to playback,  
and select channel in list tree.

Step 3: If there has files match the condition in time scope,  
it will display on timeline panel.

Step 4: double-click the device channel to playback record.

All Record						
2011/10						
SUN	MON	TUE	WED	THU	FRI	SAT
						01
02	03	04	05	06	07	08
09	10	11	12	13	14	15
16	17	18	19	20	21	22
23	24	25	26	27	28	29
30	31					



### 2.7.2. playback by searching file

Step 1: Choose the record file format and device channel

Step 2: Select the search time and click “search” button, the system will display the eligible record file in the device tree

Step 3: Select playback window and double click record file to playback record.

File playback support the same record file playback in four windows at the same time.

## 2.8. User management

The factory default administrator user of the device is admin, password is empty. After log in by administrator, he can add user, delete user and set user permission. User permission has three types: admin, user, guest.

Admin permission: can undertake device management, user management, video surveillance, record playback, map Settings, log query, switch users and exit from the client;

User permission: can undertake video surveillance, video playback, map Settings, log view, switch users and modify password

Guest permission: can undertake video surveillance, switch user and modify password.

## HIP2P IP Camera CMS user manual

Users	Permissions
admin	admin

Information

User Name:

Password:

Confirm Password:

Permissions:

Add Modify Delete Save Cancel

### 2.8.1. Add user

Step 1: After log in by admin permission, select "Settings" in the TAB bar -- "user management"

Step 2: Click "add" button, enter the user name, password and select user permission

Step 3: Click "save" button, the user added successfully

### 2.8.2. delete user

Step 1: After log in by admin permission, select "Settings" in the TAB bar -- "user management"

Step 2: Choose to delete the user, and click "delete" button

### 2.8.3. modify user permissions

Step 1: After log in by admin permission, select "Settings" in the TAB bar -- "user management"

Step 2: Select the user and click "edit" button

Step 3: Select the user permission and click "save" button



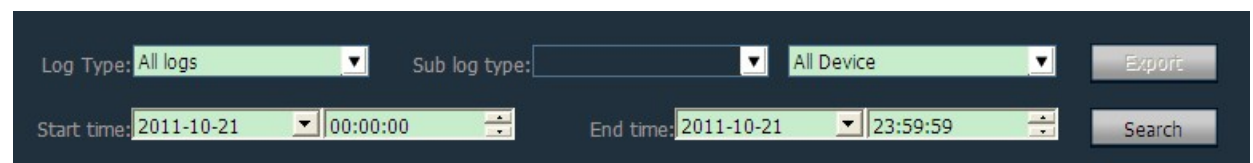
### 2.8.4. modify user password

Step 1: In the TAB bar, select the "Settings" -- "user management"

Step 2: Select the user and click "edit" button

Step 3: Enter a new password and click "save" button

## 2.9. Logs



Log type:

**【All logs】** Record all information of system

**【System log】** Record the user login, exit, and user configuration, etc

**【Operation log】** Record all operation information from users

**【Alarm log】** Recording device alarm information

### 2.9.1. log retention time

Step 1: In the tab bar, select the "Settings" -- "other Settings"

Step 2: Select time in log retention time, one month, two month, three month, six month optional, and click "save" button

### 2.9.2. log query

Step 1: Select a log type and sub log type

Step 2: Choose the device to view log, default is all devices

Choose the start time and end time of querying log and click "search" button

### 2.9.3. log backup

Step 1: Select a log type and sub log type

Step 2: Choose the device to view log, default is all devices

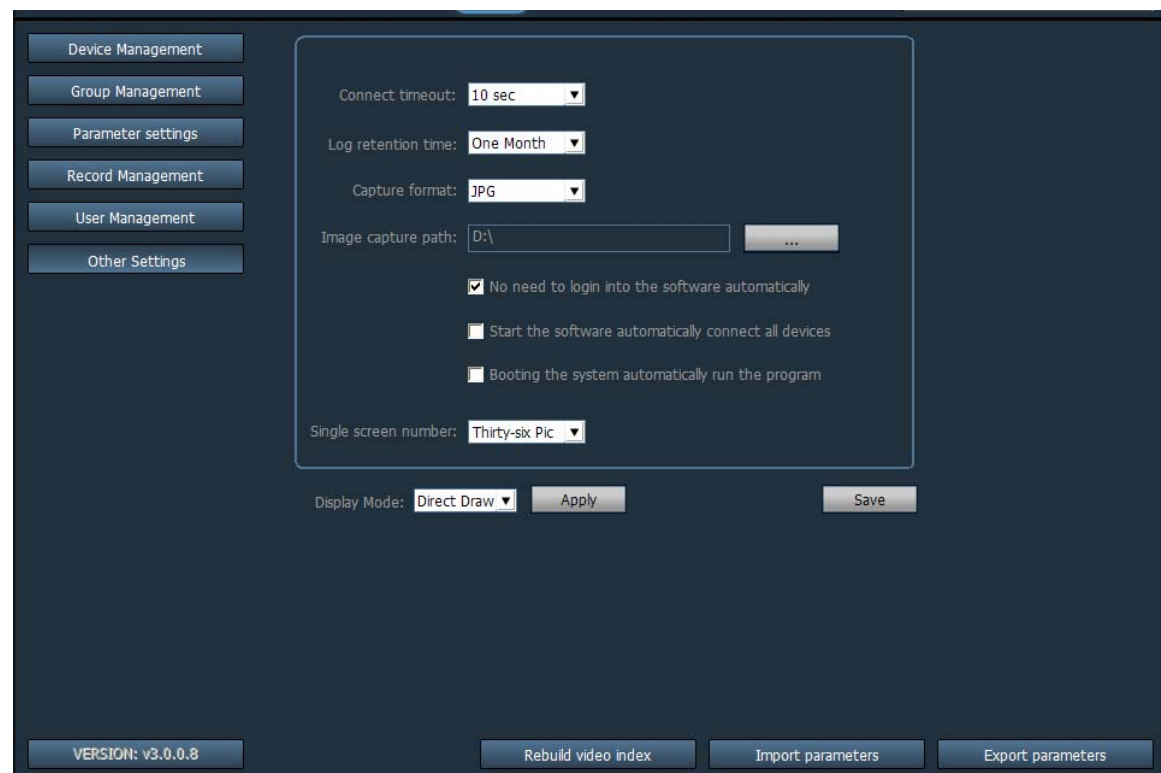
Step 3: Choose the start time and end time of querying log and click "search" button

Step 4: Click the "export" button, and choose the path of backup

## Note:

1. When backup log, you must search log firstly, then backup.
2. The export log format is Excel format.
3. Each excel table only can save 5000 pieces log, if the quantity exceed 5000, the left log will form another excel table, and so on.

## 2.10. Other settings



**【Connect timeout】** Connection timeout 5-60 seconds can be set

**【Log retention time】** It has a month, two months, three months, six months four options, the CMS logs in the set period of time can not be deleted

**【Capture format】** It refers to the CMS captured image format, capture format: JPG and BMP available

**【Image capture path】** It refers to the CMS capture save path

**【Booting the system automatically run program】** When start Windows, it

## HIP2P IP Camera CMS user manual

uploads monitoring software automatically. If you don't choose, it doesn't start.

**【Single screen number】** ) It can set maximum number of single screen: 16 pictures, 25 pictures, 36 pictures (need to restart the software to work)

**【Display mode】** Direct Draw means graphic rendering, Direct 3D means 3D rendering.

**【Password】** You can set the default password when added device.

**【Save】** Modify the parameters, then click "save" button, thus can take effect.

**【Export parameters】** Export all set parameters from CMS (backup all configuration parameters)

**【Import parameters】** import all exported setting parameters to another CMS, restore all configuration parameters (the version of two CMS must keep the same, otherwise it may occur exception.)

**【Rebuild video index】** Delete the video database index file, rebuild video database index file